



GAT MONTHLY MEMBERSHIP PROGRESS REPORT

Results as of: 5/31/2023

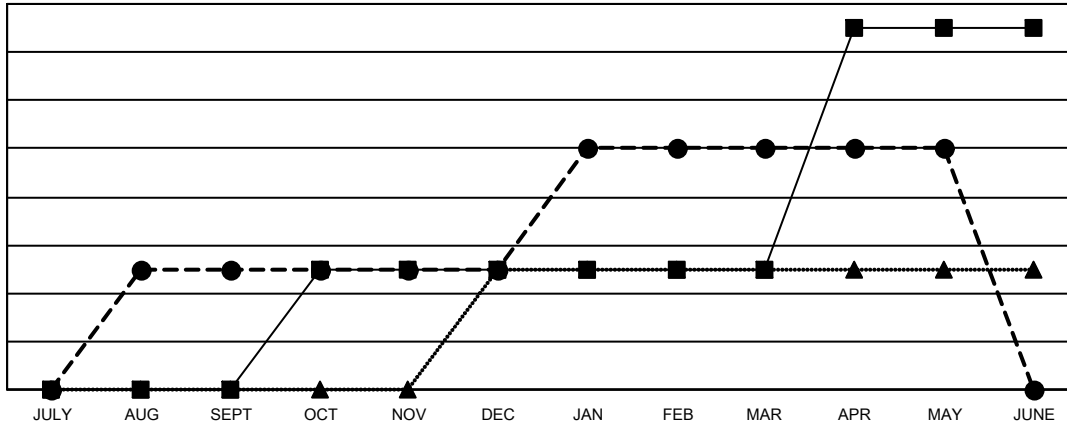
Multiple District 22

LOCATION: MARYLAND

| Clubs | | | |
|-----------------------|---------------|-----------|---------------|
| RESULTS FOR 2022-2023 | | | |
| QUARTER | NEW CLUB GOAL | NEW CLUBS | DROPPED CLUBS |
| JULY/AUG/SEPT | 0 | 1 | 0 |
| OCT/NOV/DEC | 1 | 0 | 2 |
| JAN/FEB/MAR | 0 | 1 | 0 |
| APR/MAY/JUNE | 2 | 0 | 0 |

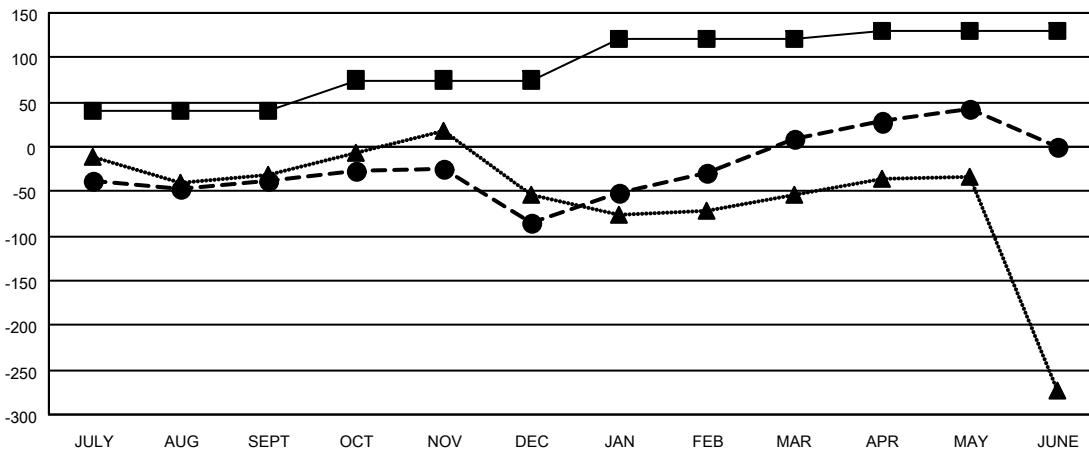
| Members | | | |
|-----------------------|------------------------|----------------------|--|
| RESULTS FOR 2022-2023 | | | |
| QUARTER | MEMBER GROWTH NET GOAL | MEMBER GROWTH ACTUAL | DROPPED MEMBERS ACTUAL (including transfers) |
| JULY/AUG/SEPT | 40 | 149 | 159 |
| OCT/NOV/DEC | 35 | 136 | 175 |
| JAN/FEB/MAR | 45 | 233 | 121 |
| APR/MAY/JUNE | 10 | 105 | 61 |

GOALS AND ACTUAL NEW CLUBS CUMULATIVE



- CURRENT YEAR GOALS FOR NEW CLUBS
- CURRENT YEAR ACTUAL NEW CLUBS
- ▲- LAST YEAR ACTUAL NEW CLUBS

GOALS AND ACTUAL MEMBERS CUMULATIVE



- MEMBER GROWTH NET GOAL
- MEMBER GROWTH ACTUAL
- ▲- LAST YEAR MEMBERSHIP ACTUAL

| | | |
|-------------------------|---|--|
| DROPPED CLUBS: 2 | 117 CLUBS OF 200 ADDED 1 OR MORE NEW MEMBERS | GENDER DISTRIBUTION |
| DROPPED MEMBERS | CLICK HERE FOR CUMULATIVE MEMBERSHIP DATA | MALE 3,628 (62.30%) |
| DECEASED 96 | | FEMALE 2,195 (37.70%) |
| CLUB CANCELLED 28 | | NON BINARY 0 (0.00%) |
| OTHER 392 | | PREFER NOT TO ANSWER 0 (0.00%) |
| TOTAL 516 | | TOTAL FAMILY UNIT MEMBERS 1,077 |
| | | FAMILY MEMBERS PAYING HALF DUES 562 |